



**GXTF**

TRITON IMAGING FORMAT

VOL. 02-03

Ivan V. Dmitriev  
06.12.2021

**Contents**

**1. Introduction.....4**

**2. Xtf files read and write functions.....6**

    2.1 Message Header .....6

    2.2 000=Sonar Data Message.....6

**3. Xtf additional functions .....8**

    3.1 Delete Messages from Xtf-structure.....8

    3.2 Append files .....8

    3.3 Delete Slant-range data for Sonar Data Message .....8

    3.4 Create Poly-line from files with Sonar Data Message .....9

    3.5 Interpolate fields from Head1 to fields for Head2 with Message Type 000 .....10

    3.6 Create DTEN fields (coordinates transformation) .....10

    3.7 Convert DTEN-fields data to Xtf-header .....11

    3.8 Create Dataset from Xtf-files with Message Type 000 .....11

    3.9 Insert Dataset with Message Type 000 to Xtf-files .....12

**4. Examples for Xtf .....14**

    4.1 Example 1.....14

    4.2 Example 2.....14

**Citation.....16**

***Tables list***

***Table 1.1*** gXtf functions .....4

***Figures list***

***Figure 1.1*** Xtf records structure .....4

***Figure 4.1*** gXtf using (example) .....15

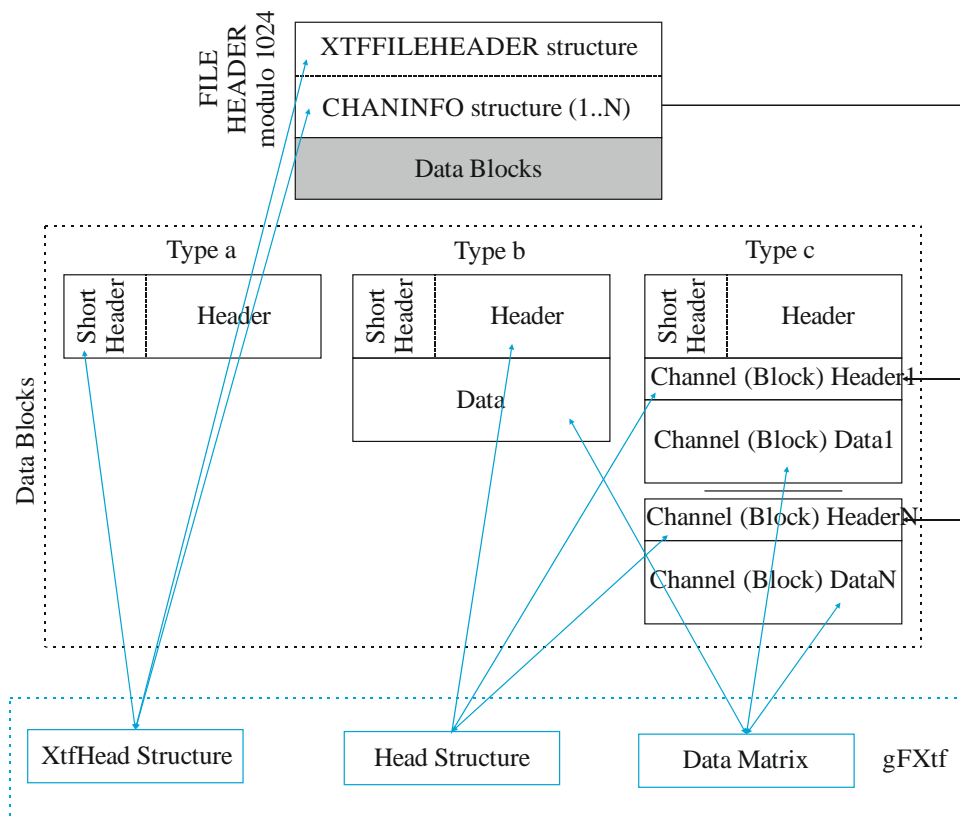
# 1. Introduction

MatLab functions set for reading and writing Xtf-files (*Table 1.1*). Based on the paper “Triton Imaging, Inc. eXtended Triton Format (XTF) Rev. 35”.

*Table 1.1* gXtf functions

Function name	Function description
gXtfHeaderRead	Read XtfHead structure from *.xtf file.
gXtfHeaderWrite	Write XtfHead structure to new *.xtf file.
gXtfFileSetMessOff	Mark messages typed in Head to Delete from Xtf structure.
gXtfFilesAppend	Append Xtf files in order, using Header data.
gXtf000Read	Read [Head,Data] from XtfHead.fName (*.xtf) file for Message Type 000
gXtf000Write	Write [XtfHead,Head,Data] to *.xtf file for Message Type 000.
gXtf000Dir2PL	Read coordinates form SSS files (Message Type 000) to PL-structure.
gXtf000DeleteSlant	Delete slant-range data in Xtf-structure for Message Type 000
gXtf000Field2Field	Interpolate fields from Head1 to fields for Head2 with Message Type 000
gXtfDTEN	Create Nav's fields GpsDay,GpsTime,GpsE,GpsN,GpsH from Xtf-fields
gXtfDTENinv	Create Xtf-fields from Nav's fields GpsDay,GpsTime,GpsE,GpsN,GpsH
gXtf000DatasetImport	Create Dataset from Xtf-files with Message Type 000
gXtf000DatasetExport	Insert Dataset with Message Type 000 to Xtf-files

Xtf-file includes the File Header and Data Blocks (*Figure 1.1*). File Header consists of two structures XtfFileHeader and ChanInfo. The number of channels in ChanInfo structure can be different and assigned in XtfFileHeader structure.



*Figure 1.1* Xtf records structure

There are three types of Data Blocks:

- a) Header only (structured data with fields);
- b) Header with follow Data (where Data is the element of big numeric matrix, the same MBES ping);
- c) Header with follow chain Channel's Header and Channel's Data (where Data is the element of big numeric matrix, the same sonar ping, as part of channel data).

### **XtfHead and Head structures**

XtfHead include XTFFILEHEADER, CHANINFO and Short Header structures from xtf-file.

The Short Header defined in the gFXtf, as a piece of Head. The Short Header used for navigation in the file; Short Header not load in gFXtf Head Structure (to avoid data duplication). It does include the first six fields, general for most Headers: 1) XtfHead.RFace; 2) XtfHead.RHeaderType; 3) XtfHead.RSubChannelNumber; 4) XtfHead.RNumChansToFollow; 5) XtfHead.RUnused; 6) XtfHead.RNumBytesThisRecord.

XtfHead include the next addition fields:

XtfHead.Descript – description for some types of structure fields;

XtfHead.fName – name of Xtf-file for that structure.

XtfHead.RSeek – File pointer in Xtf-file to each Header Block part, the next after Short Header.

XtfHead.ROnFlag – Flag WriteOn for each Head or [Head,Data] (depending on context).

## 2. Xtf files read and write functions

### 2.1 Message Header

#### **function XtfHead=gXtfHeaderRead (fName,flStat)**

Read XtfHead structure (include XTFFILEHEADER, CHANINFO and Short Header) from \*.xtf file.

Parameters:

XtfHead – XtfHead structure;

fName – the target file name;

flStat – flag for statistics display (1 or 0).

Example: `XtfHead=gXtfHeaderRead ('c:\temp\1.xtf',1);`

#### **function gXtfHeaderWrite (XtfHead,fNameNew)**

Write XtfHead structure (include XTFFILEHEADER, CHANINFO and Short Header) to new \*.xtf file.

Parameters:

XtfHead – structure with parent xtf-file description;

fNameNew – string, the target file for writing.

gFXtfWriteHeader used file XtfHead.fName as data source. The file XtfHead.fName must be presented; names XtfHead.fName and fNameNew must be different.

You can use XtfHead.ROnFlag to except any record from new ftx-file (see gXtfHeaderMessOff).  
Warning: for new file CHANINFO Structure not controlled; if necessary, remove Chanel Records in handle.

Example: `gXtfHeaderWrite (XtfHead,'c:\temp\1new.xtf');`

### 2.2 000=Sonar Data Message

#### **function [Head,Data]=gXtf000Read(XtfHead,SubCh)**

Read [Head,Data] from XtfHead.fName (\*.xtf) file for Message Type 000 (Sonar Data Message).

Parameters:

XsfHead – Xsf Header structure;

SubCh – sub channel number;

Head – Header structure;

Data – Data Body for sonar channels.

Head include the next addition fields: Head.HSubChannelNumber, Head.HMessageNum.

Example: `[Head,Data]=gXtf000Read(XtfHead,0);`

**Warning!** There is any lawlessness for SubChannelNumber corresponding between CHANINFO structure and Channel's Header. For two channels xtf-file

C-Max >>> XtfHead.CSubChannelNumber=[0 1] and XtfHead.RSubChannelNumber(:)=0;  
EdgeTech4200 >>> XtfHead.CSubChannelNumber=[0 0] and XtfHead.RSubChannelNumber(:)=0;  
Qinsy >>> XtfHead.CSubChannelNumber=[0 1] and XtfHead.RSubChannelNumber(:)=1.

**function gXtf000Write(XtfHead,Head,Data,fNameNew,flTraceLenChanged)**

Write [XtfHead,Head,Data] to \*.xtf file for Message Type 000 (Sonar Data Message).

Parameters:

XsfHead – Xsf Header structure;

Head – Header structure;

Data – Data Body for sonar channels;

fNameNew – string, the target file for writing;

flTraceLenChanged – key for changes:

flTraceLenChanged=0, if Data Trace Length (Head.CNumSamples) was not changed;

flTraceLenChanged=1, if Data Trace Length (Head.CNumSamples) was changed (see gXtf000DeleteSlant) and RNumBytesThisRecord field need to correct;

flTraceLenChanged=2, if file XtfHead.fName is absent;

%gXtf000Write used file XtfHead.fName as data source for XtfHead.RHeaderType~=0. The file XtfHead.fName must be presented (flTraceLenChanged=2 is exception); names XtfHead.fName and fNameNew must be different.

The XtfHead is description for XtfHead.fName file. Only XtfHead.ROnFlag can be changed to this structure. XtfHead.ROnFlag can be used to except any record for new xtf-file.

If you change Data-Trace Length (Head.CNumSamples), the RNumBytesThisRecord field must be correct. Use flTraceLenChanged==1 for correction.

Example: `gXtf000Write(XtfHead,Head,Data,'c:\temp\1new.xtf',0);`

### 3. Xtf additional functions

#### 3.1 Delete Messages from Xtf-structure

##### **function XtfHead=gXtfFileSetMessOff(XtfHead,Head,mask)**

Mark messages typed in Head to Delete from Xtf structure; need write file with gXtfWriteHeader for Deleting.

Parameters:

[XtfHead,Head] – Xtf structures;

mask – mask for messages marked off/on (logical or trace\_numbers);

XtfHead – Xtf structure with messages switched off.

Function Example:

```
>> XtfHead=gXtfHeaderRead ('e:\ND49_V17B1212_SSSH.xtf',1);
>> [Head,Data]=gXtf000Read(XtfHead,0);
>> mask=logical(ones(1,size(Data,2)));mask(1:4000)=0;
>> XtfHead=gXtfFileSetMessOff(XtfHead,Head,mask);
>> gXtfHeaderWrite (XtfHead,'e:\ND49_V17B1212_SSSH.z.xtf');
>> XtfHead= gXtfHeaderMessOff (XtfHead,Head,1:6000);
>> gXtfHeaderWrite (XtfHead,'e:\ND49_V17B1212_SSSH.z.xtf');
```

#### 3.2 Append files

##### **function gXtfFilesAppend(fNameNew,varargin)**

Append Xtf files in order, using Header data.

Parameters:

fNameNew – file name for appending result;

varargin{1..N} – file names will be appending.

The XTFFILEHEADER Structure and CHANINFO Structure get from file varargin{1}. It must be equal for all appending files. ShortHeader structures and Data Blocks appended from all files.

Example:

```
gXtfFilesAppend ('c:\temp\App.xtf','c:\temp\1.xtf','c:\temp\2.xtf','c:\temp\3.xtf');
```

#### 3.3 Delete Slant-range data for Sonar Data Message

##### **function [Head,Data]=gXtf000DeleteSlant(Head,Data,mask)**

Delete slant-range data in Xtf-structure for Message Type 000 (Sonar Data Message).

Parameters:

[Head,Data] – Xtf structure // Data must contained traces with equal length;

mask – mask for slant-range data delete (logical or trace\_numbers);

[Head,Data] – Xtf structure with deleted slant-range data.



Function Example:

```
>> XtfHead=gXtfHeaderRead ('e:\ND49_V17B1212_SSSH.xtf',1)
>> [Head,Data]=gXtf000Read(XtfHead,0);
>> figure(1);imagesc(Data(:,1));figure(2);imagesc(Data(:,2));
>> [Head,Data]=gXtf000DeleteSlant(Head,Data,1:2000);
>> figure(3);imagesc(Data(:,1));figure(4);imagesc(Data(:,2));
>> gXtf000Write(XtfHead,Head,Data,'e:\ND49_V17B1212_SSSHzz.xtf',1);
```

### 3.4 Create Poly-line from files with Sonar Data Message

**function PL=gXtf000Dir2PL(fName,KeyLineDraw,FieldKP,FieldX,FieldYNavS,NavP,  
XtfHeadNavUnitsForce)**

Read coordinates form Directory with SSS files (Message Type 000) to PL-structure.

Parameters:

fName – reading file name or folder name with files (last name's symbol must be '\');

keyLineDraw- string key for line drawing: '-r','xb', etc;

FieldKP – field from Head structure (gFSgyRead function) copied to PL(n).pKP; if empty, than  
PL(n).pKP=1:length(PL(n).pX).

FieldX,FieldY – the names of X and Y fields; there are

Head.HShipYcoordinate,Head.HShipXcoordinate,Head.HSensorYcoordinate,Head.HSensorXcoordinate;

NavS – (see gNavCoord2Coord) navigation datum for Sensor, fields: EllipParam, ProjParam,  
ProjForvFunc, ProjRevFunc, EllipTransParam, EllipForvTransFunc, EllipRevTransFunc,  
TargCode.

if ~isfield(NavS.EllipTransParam), then transformation Sensor's\_Ellipsoid-to-Project's ellipsoid not  
calculate (fields EllipTransParam, EllipForvTransFunc, EllipRevTransFunc not used).

NavP – (see gNavCoord2Coord) navigation datum for Project, fields: EllipParam, ProjParam,  
ProjForvFunc, ProjRevFunc, TargCode.

NavPTargCodes= forced output\_datum\_code (see gNavCoord2Coord); there are: 1) sensor XY;  
2) sensor geographic; 3) sensor geocentric; 4)project geocentric; 5)project geographic; 6)project  
XY.

if isempty(NavS)&&isempty(NavP)&&isempty(NavPTargCode), than there is no any coordinate  
transformation;

XtfHeadNavUnitsForce – forced value for XtfHead.HNavUnits; if empty, than no forced;

PL – output structure: PL(n).PLName; PL(n).Type; PL(n).KeyLineDraw; PL(n).GpsE; PL(n).GpsN;  
PL(n).GpsH; PL(n).GpsKP (to GpsKP write ping number in file).

Example:

```
>> NavS=struct('TargCode',2);NavP=struct('EllipParam',[6378137 0.081819190842],'ProjParam',[0 142
0.9996 500000
0],'ProjForvFunc','gNavGeog2ProjUtm','ProjRevFunc','gNavProjUtm2Geog','TargCode',6);
>> PLXtf=gXtf000Dir2PL('c:\temp\SSS\3\','-
b','HPingNumber','HShipYcoordinate','HShipXcoordinate',NavS,NavP,[]);gMapPLDraw(100,PLXtf);axis
equal;
```

### 3.5 Interpolate fields from Head1 to fields for Head2 with Message Type 000

#### **function Head2=gXtf000Field2Field(Head1,fi1,Head2,fi2)**

Interpolate fi1-field from Head1 to fi2-field for Head2 using time-fields (HYear,HMonth,HDay,HHour,HMinute,HSecond,HHSeconds).

Parameters:

Head1- head-structure used as data source;

fi1- field name (chars vectors or cells with chars vectors) of Head1, used as data source;

Head2- head-structure used as data receiver;

fi1- field name (chars vectors or cells with chars vectors) of Head2, used as data receiver;

The data linear interpolated/extrapolated from Head1.(fi1) to Head2.(fi2) using time-fields (HYear,HMonth,HDay,HHour,HMinute,HSecond,HHSeconds).

Example:

```
>> XtfHead1=gXtfHeaderRead('g:\zzzzz\0300_20_21(00)H_sn.xtf',1);
>> [Head1,Data1]=gXtf000Read(XtfHead1,0);
>> XtfHead2=gXtfHeaderRead('g:\zzzzz\0300_20_21(00)L.xtf',1);
>> [Head2,Data2]=gXtf000Read(XtfHead2,0);
>> Head2=gXtf000Field2Field(Head1,{'HSensorYcoordinate','HSensorXcoordinate'},Head2,
{'HSensorYcoordinate','HSensorXcoordinate'});
>> gXtf000Write(XtfHead2,Head2,Data2,'g:\zzzzz\0300_20_21(00)L_sn.xtf',0);
```

### 3.6 Create DTEN fields (coordinates transformation)

#### **function Head=gXtfDTEN(XtfHead,Head,FieldKP,FieldX,FieldY,NavS,NavP, HNavUnitsForce, varargin)**

Create Nav's fields GpsDay,GpsTime,GpsE,GpsN,GpsH from Xtf-files fields (different for Messages Types)

Parameters:

[XtfHead,Head] – Xtf structure;

FieldKP – the name of Kp-field; there are HMessageNum, HPingNumber;

FieldX,FieldY – the names of X and Y fields; there are Head.HShipYcoordinate, Head.HShipXcoordinate, Head.HSensorYcoordinate, Head.HSensorXcoordinate;

NavS – Sensor's Nav-structure (for segy-file);

NavP – Project's Nav-structure;

HNavUnitsForce- forced HNavUnits for XtfHead (if empty, than no forced changes);

varargin=H – height in Sensor's Nav-structure datum;

Head – output Header with fields: GpsDay,GpsTime,GpsE,GpsN,GpsH.

Used functions: gNavTime2Time,gNavDayCheck,gNavCoord2Coord.

Example:

```
>> Head=gXtfDTEN(XtfHead,Head,'HPingNumber','HShipYcoordinate',...  
    'HShipXcoordinate',NavS,NavP,[],H);
```

### 3.7 Convert DTEN-fields data to Xtf-header

**function[XtfHead,Head,varargout]=gXtfDTENinv(XtfHead,Head,FieldKP,FieldX,FieldY,NavS,  
 NavP,HNavUnitsForce)**

Use Nav's fields [GpsDay,GpsTime,GpsE,GpsN,GpsH,FieldKP] from Head's-Xtf-files-fields to calculate [(FieldX),(FieldY),HYear,HJulianDay,HHour,HMinute,HSecond,HHSeconds,(FieldKP)]

Parameters:

[XtfHead,Head] – Xtf structure;

FieldKP – the name of Kp-field; there are HMessageNum, HPingNumber

FieldX,FieldY – the names of X and Y fields; there are

Head.HShipYcoordinate,Head.HShipXcoordinate,Head.HSensorYcoordinate,Head.HSensorXcoordinate;

NavS – Sensor's Nav-structure (for xtf-file);

NavP – Project's Nav-structure;

HNavUnitsForce – forced HNavUnits for XtfHead (if empty, than no forced changes);

XtfHead – output XtfHead with updated XtfHead.HNavUnits;

Head – output Header with updated fields

[(FieldX),(FieldY),HYear,HJulianDay,HHour,HMinute,HSecond,HHSeconds,(FieldKP)];

varargout=H – output height in Sensor's Nav-structure datum;

Used functions: gNavTime2Time,gNavDayCheck,gNavCoord2Coord.

Example:

```
>> [XtfHead,Head]=gXtfDTENinv(XtfHead,Head,'HPingNumber','HShipYcoordinate',...  
    'HShipXcoordinate',NavS,NavP,[],H);
```

### 3.8 Create Dataset from Xtf-files with Message Type 000

**function [XtfHead,Head,Data]=gXtf000DatasetImport(fName,tmpName,XtfHead,SubCh,Head,  
 Data,FieldKP,FieldX,FieldY,NavS,NavP,HNavUnitsForce)**

Add xtf-files for Message Type 000 (Sonar Data Message) from file-list or folder to Dataset.

Parameters:

fName – list with file's names or folder name with xtf (Message Type 000 - Sonar Data Message) will be loaded;

tmpName – folder name for temporary files saving; if isempty, than Data will be empty;

XtfHead – input XtfHead(1..n) structure (can be empty);

SubCh – sub channel number;

Head – input Head(1..n) structure (can be empty);

Data – input cells with Data-matrix or temporary file names;

FieldKP – the name of Kp-field; there are HMessageNum, HPingNumber

FieldX,FieldY – the names of X and Y fields; there are Head.HShipYcoordinate, Head.HShipXcoordinate, Head.HSensorYcoordinate, Head.HSensorXcoordinate;

NavS – sensor's vanigation structure (see gNavCoord2Coord) for coordinates transformation;

NavP – sensor's vanigation structure (see gNavCoord2Coord) for coordinates transformation;

HNavUnitsForce – forced HNavUnits for XtfHead (if empty, than no forced changes);

[XtfHead,Head,Data] – output variables with added data from files;

Additional fields:

XtfHead(n).fNameTmp – name of temporary file with Data matrix;

GpsDay,GpsTime,GpsE,GpsN,GpsH – fields created by function gXtfDTEN.

Example:

```
>> NavS=struct('TargCode',2);NavP=struct('EllipParam',[6378137 0.081819190842],'ProjParam',[0 142  
0.9996 500000 0],'ProjForvFunc','gNavGeog2ProjUtm','ProjRevFunc','gNavProjUtm2Geog',  
'TargCode',6);
```

```
>> [XtfHead,Head,Data]=gXtf000DatasetImport('c:\xtfin\','c:\xtfin\tmp\',XtfHead,0,Head,Data,  
'HPingNumber','HShipXcoordinate','HShipYcoordinate',NavS,NavP,0);
```

```
>> [XtfHead,Head,Data]=gXtf000DatasetImport('c:\xtfin\','c:\xtfin\tmp\',[],0,[],[], 'HPingNumber',  
'HSensorXcoordinate','HSensorYcoordinate',[],[],[]);
```

### 3.9 Insert Dataset with Message Type 000 to Xtf-files

**function gXtf000DatasetExport(DirName,XtfHead,Head,Data,FieldKP,FieldX,FieldY,NavS,NavP,  
HNavUnitsForce)**

Add Xtf-variables from Dataset for Message Type 000 (Sonar Data Message) to files (GpsKP,GpsDay,GpsTime,GpsE,GpsN,GpsH fields are used).

Parameters:

DirName – folder for export;

XtfHead – input XtfHead(1..n) structure (can be empty);

Head – input Head(1..n) structure (can be empty);

Data – input cells with Data-matrix or temporary file names;

FieldKP – the name of Kp-field; there are HMessageNum, HPingNumber

FieldX,FieldY – the names of X and Y fields; there are

Head.HShipYcoordinate,Head.HShipXcoordinate,Head.HSensorYcoordinate,Head.HSensorXcoordinate;

NavS – sensor's navigation structure (see gNavCoord2Coord) for coordinates transformation;

NavP – project's navigation structure (see gNavCoord2Coord) for coordinates transformation;

HNavUnitsForce – forced HNavUnits for XtfHead (if empty, than no forced changes).

Additional fields:

XtfHead(n).fNameTmp – name of temporary file with Data matrix;

GpsKP,GpsDay,GpsTime,GpsE,GpsN,GpsH – fields with time and coordinates used function gXtfDTENinv.

Example:

```
>> NavS=struct('TargCode',2);NavP=struct('EllipParam',[6378137 0.081819190842],'ProjParam',[0 142  
0.9996      500000      0],'ProjForvFunc','gNavGeog2ProjUtm','ProjRevFunc','gNavProjUtm2Geog',  
'TargCode',6);  
>> [XtfHead,Head,Data]=gXtf000DatasetImport('c:\xtfin\'','c:\xtfin\tmp\'',XtfHead,0,Head,Data,  
'HPingNumber','HShipYcoordinate','HShipXcoordinate',NavS,NavP,[],0);  
>> gXtf000DatasetExport('c:\xtfout\'',XtfHead,Head,Data,'HPingNumber','HShipYcoordinate',  
'HShipXcoordinate',NavS,NavP,[]);
```

## 4. Examples for Xtf

### 4.1 Example 1

```
%Read XtfHead for Qinsy and show statistic
>> XtfHead=gXtfHeaderRead ('c:\temp\1.xtf',1);
Rec: 0=XTF_HEADER_SONAR (Sidescan data), Num: 11079 [ SubCh: 1, Num: 11079; ChFollow: 2,
Num: 11079 ]
Rec: 66=XTF_HEADER_QINSY_R2SONIC_FTS QINSy R2Sonics Foot Print Time Series (snippets),
Num: 11079 [ SubCh: 2, Num: 11079; ChFollow: 0, Num: 11079 ]
Rec: 100=XTF_HEADER_POSITION Raw position packet - Reserved for use by Reson, Inc. RESON
ONLY, Num: 3049 [ SubCh: 1, Num: 3049; ChFollow: 0, Num: 3049 ]
% Save xtf-file with XtfHead
>> gXtfHeaderWrite (XtfHead,'c:\temp\1new.xtf');
% Set XtfHead.ROnFlag at 0 for Header Type 100
XtfHead.ROnFlag(XtfHead.RHeaderType ==100)=0;
% Save xtf-file with XtfHead (without Header Type 100)
>> gXtfHeaderWrite (XtfHead,'c:\temp\2new.xtf');
%Read XtfHead from new file and show statistic
>> XtfHeadNew=gXtfHeaderRead ('c:\temp\2new.xtf',1);
Rec: 0=XTF_HEADER_SONAR (Sidescan data), Num: 11079 [ SubCh: 1, Num: 11079; ChFollow: 2,
Num: 11079 ]
Rec: 66=XTF_HEADER_QINSY_R2SONIC_FTS QINSy R2Sonics Foot Print Time Series (snippets),
Num: 11079 [ SubCh: 2, Num: 11079; ChFollow: 0, Num: 11079 ]
```

### 4.2 Example 2

```
%Read XtfHead without statistic
>> XtfHead=gXtfHeaderRead ('c:\temp\Qinsy0001.xtf',0);
%Read sonar channel (Header Type 000)
>> [Head,Data]=gXtf000Read(XtfHead,1);
%Draw sonar channel 1 data (Figure 4.1, a)
>> imagesc(Data(:,1));
%Set part of Data to 50000 for testing
>> Data(:,1:4000,1)=5e4;
% Write XtfRecords with Header Type 000 to a new file
>> gXtf000Write(XtfHead,Head,Data,'c:\temp\Qinsy0001.xtf',0);
% Read new XtfHead without statistic
```

```

>> XtfHeadNew=gXtfHeaderRead('c:\temp\Qinsy0001.xtf',0);
%Read new sonar channel (Record Type 80)
>> [HeadNew,DataNew]=gXtf000Read(XtfHeadNew,1);
%Draw new sonar channel 1 data (Figure 4.1, b)
>> imagesc(Data(:, :, 1));
%Draw sonar track plot (Figure 4.1, c)
>> plot(Head.HShipYcoordinate./nnn,Head.HShipXcoordinate./nnn);
%Draw sonar SlantRange (Figure 4.1, d)
>> plot([Head.CSlantRange(:,1) Head.CSlantRange(:,2)+3]);

```

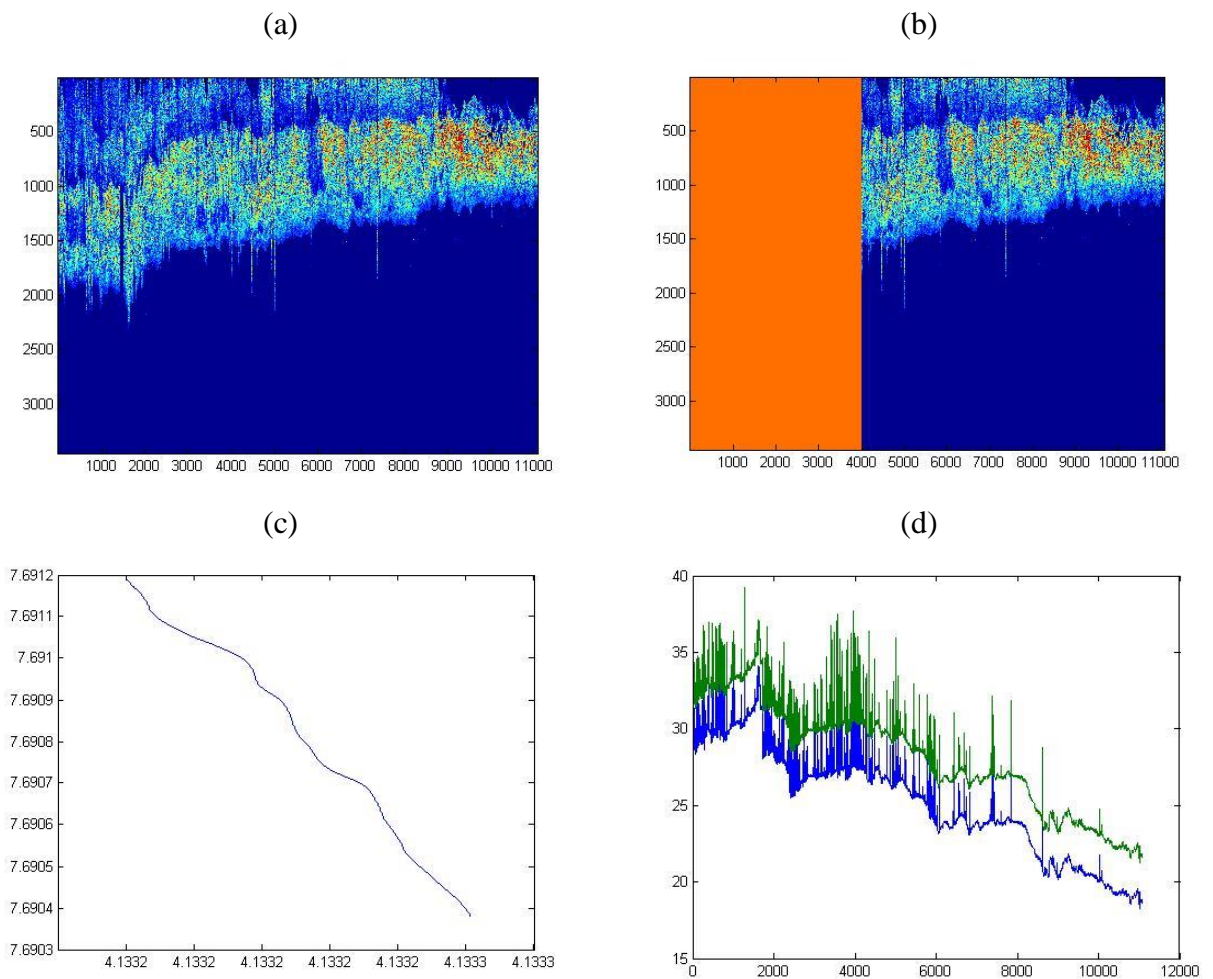


Figure 4.1 gXtf using (example)

## **Citation**

- 1) Triton Imaging, Inc. eXtended Triton Format (XTF) Rev. 35. 02/04/2013