

Table of Contents

1	Creating a project for this PLR Mag data import	1
2	Importing the PLR Data using the PLR Template	1
3	Editing Selected Lines of the Mag Data	6
4	Post-Processing Suggestions	8

1 Creating a project for this PLR Mag data import

This section demonstrates the CREATE PROJECT dialog for this sample PLR type magnetometry data file 24071311PLR.txt. the examples were done in SonarWiz5.04.0007.

Select File-> NEW and create a new project defined like this

Create a New Project...

Vessel Name: FerrousBuehler1

Project Name: Sample_PLR_MagData

Project: D:\SonarWiz-Projects\Sample_PLR_MagData

☐ Maintain backward compatibility with older versions of SonarWiz

Approximate Project Position

Latitude: 28° 59.0000' N

Longitude: 091° 27.00000' W

Use GPS Position

Get From File..

Select from World Cities

Coordinate Source

☒ Auto (Use fish if valid, otherwise use ship)

☐ Always Use Fish Position

☐ Always Use Ship Position

Time Constant for Course Smoothing: 20 pings.

Coordinate System

LA-5-MOD

EPSG Code: ???

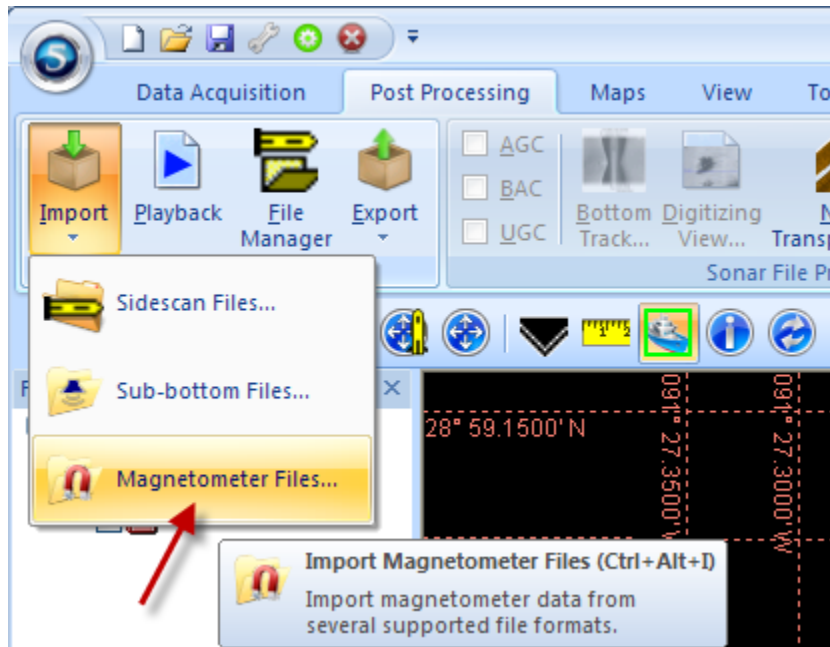
☐ Automatically Select Coordinate System

NAD27 Louisiana State Planes, Southern Zone, US Foot

Browse Coordinate Systems...

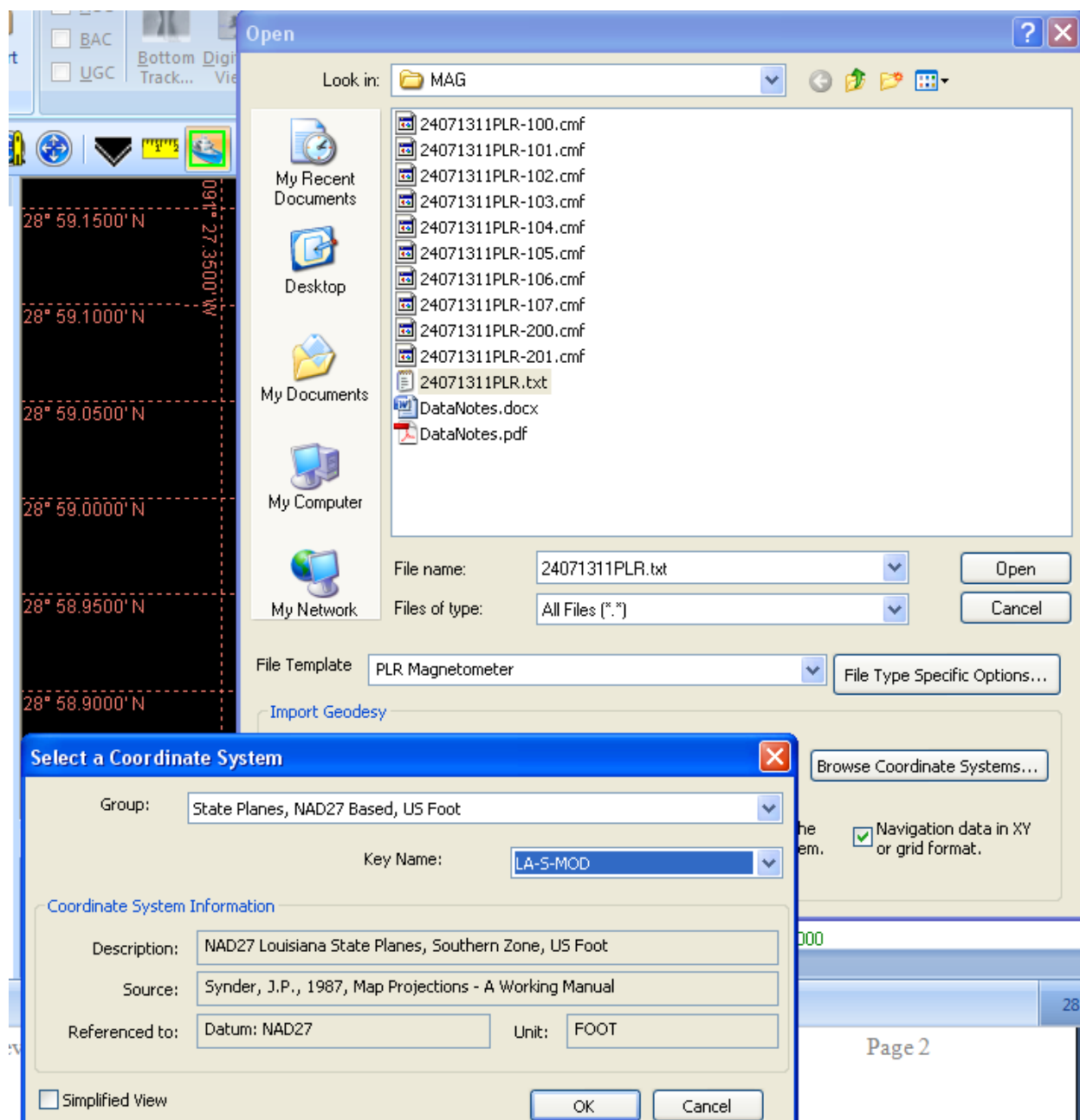
2 Importing the PLR Data using the PLR Template

Once the project is created, copy/paste your PLR TXT file to the MAG folder of the project. Then the next step is simply to import the PLR magnetometry data previously recorded into an ASCII format text file. Here's how to do this step: Select Post-Processing -> IMPORT -> Magnetometer Files...

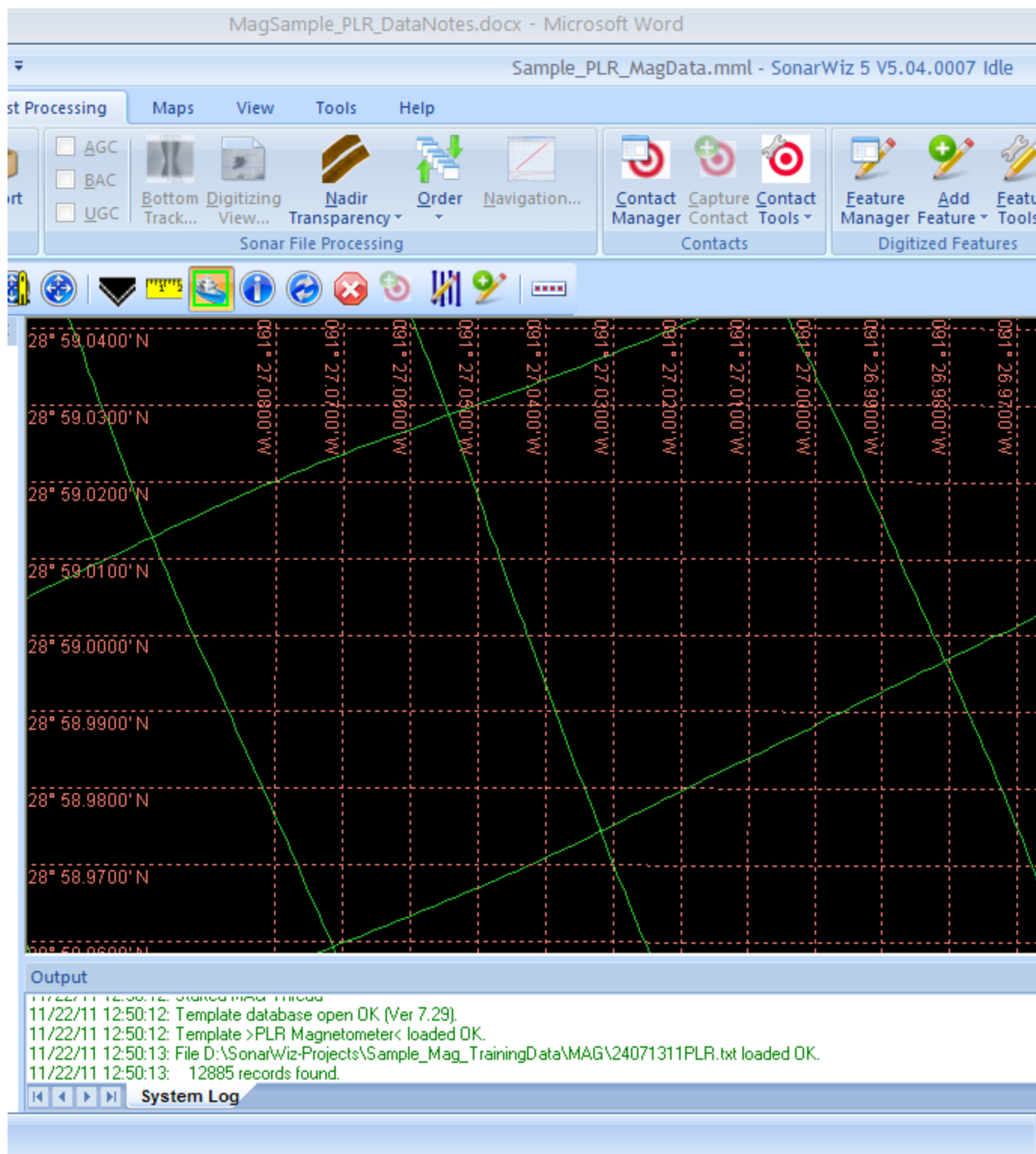


Then in the import dialog, select the import like this, being sure to select the

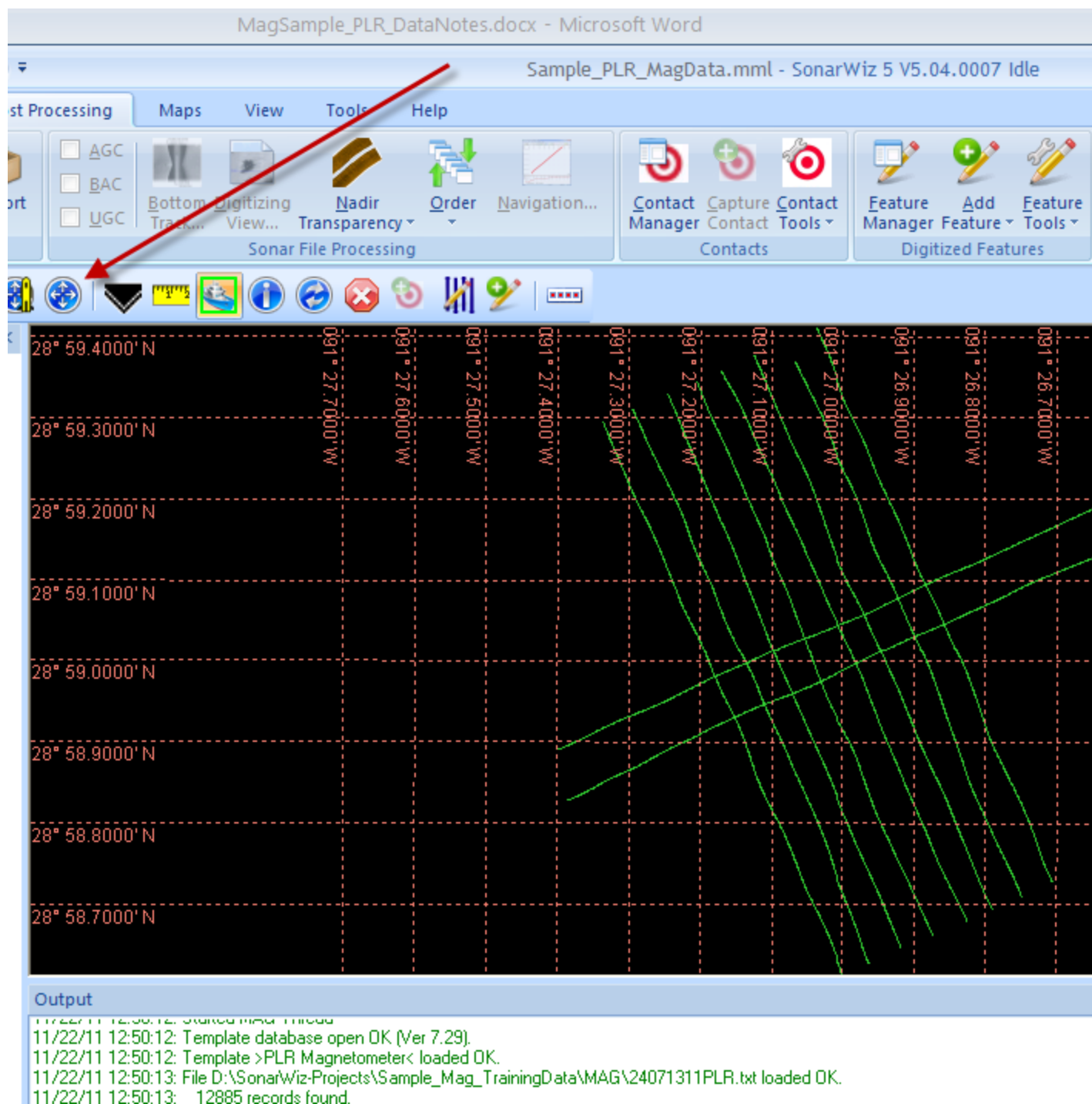
“PLR Magnetometer” File Template, and the State Planes, NAD27 Based, US Foot and key=LA-S-MOD for the coordinate system.



Then the data should import, though it may appear zoomed too far, in the mosaic view, like this:

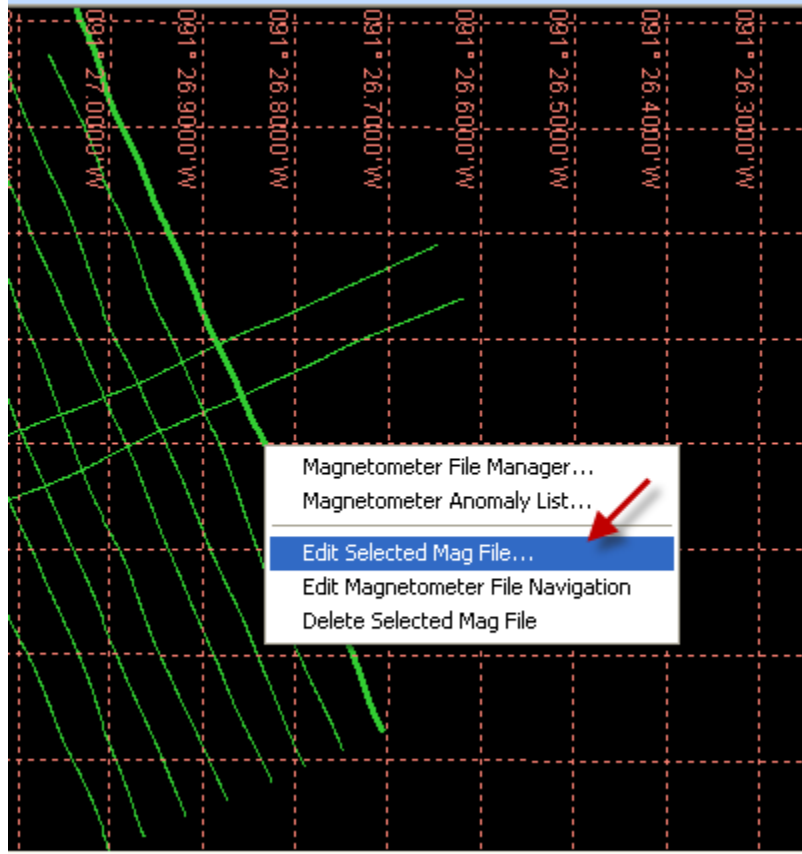


If you want to center your data in the mosaic, and see all of it, just click on the centering-ranging icon like this (red arrow), and the data will all appear centered in the mosaic:

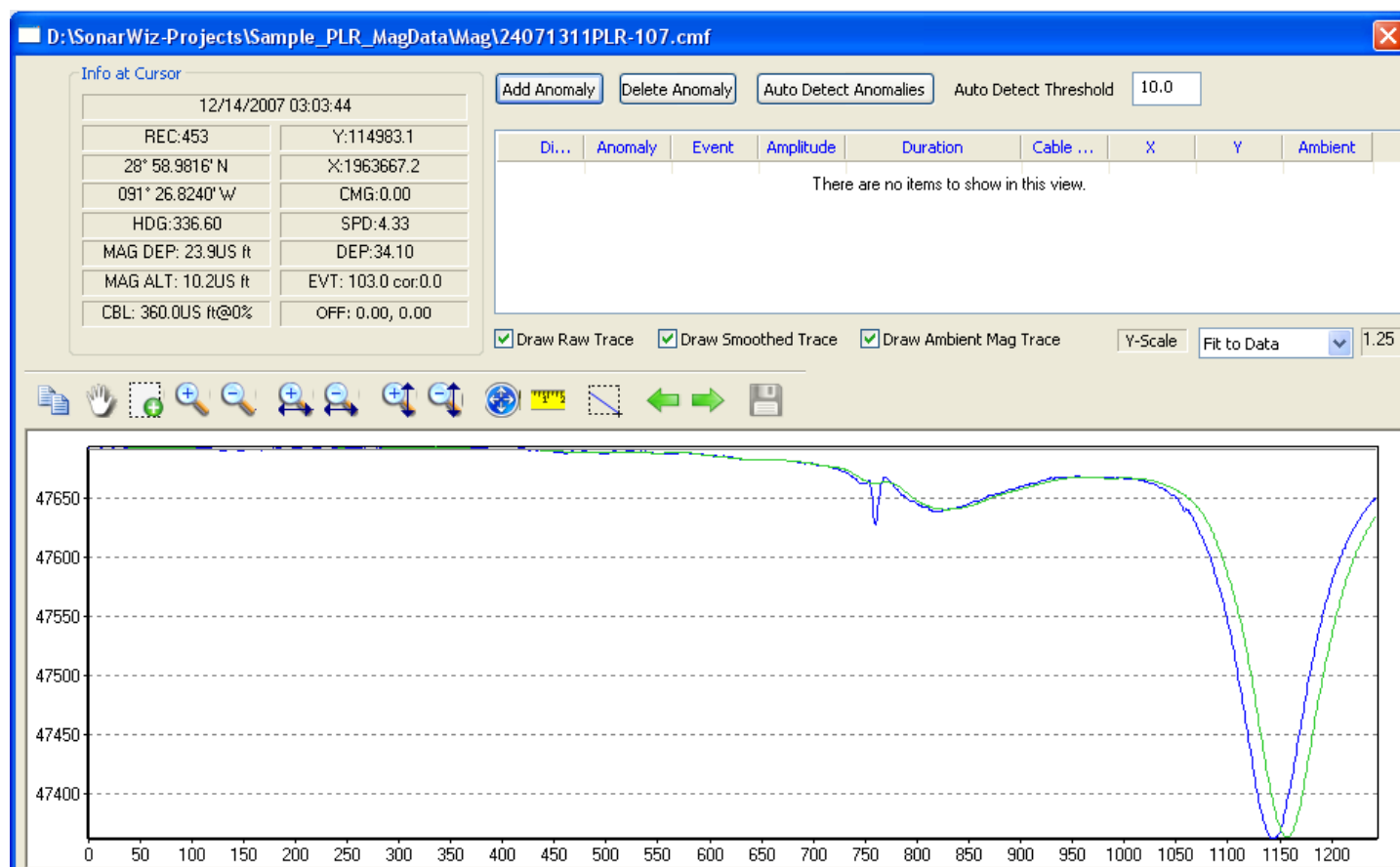


3 Editing Selected Lines of the Mag Data

Right-clicking any single line of the PLR mag data brightens (thickens) this NAV-plot mode of the data, and then you can right-click and select to EDIT SELECTED MAG DATA, like this:



The Mag Editor presents this particular line like this:



4 Post-Processing Suggestions

Try auto-detection of anomalies at threshold=100, and you're on your way!

